

1 LEVEL 1 AREA TAKE-OFF  
1/8" = 1'-0"



2 LEVEL 2 AREA TAKE-OFF  
1/8" = 1'-0"

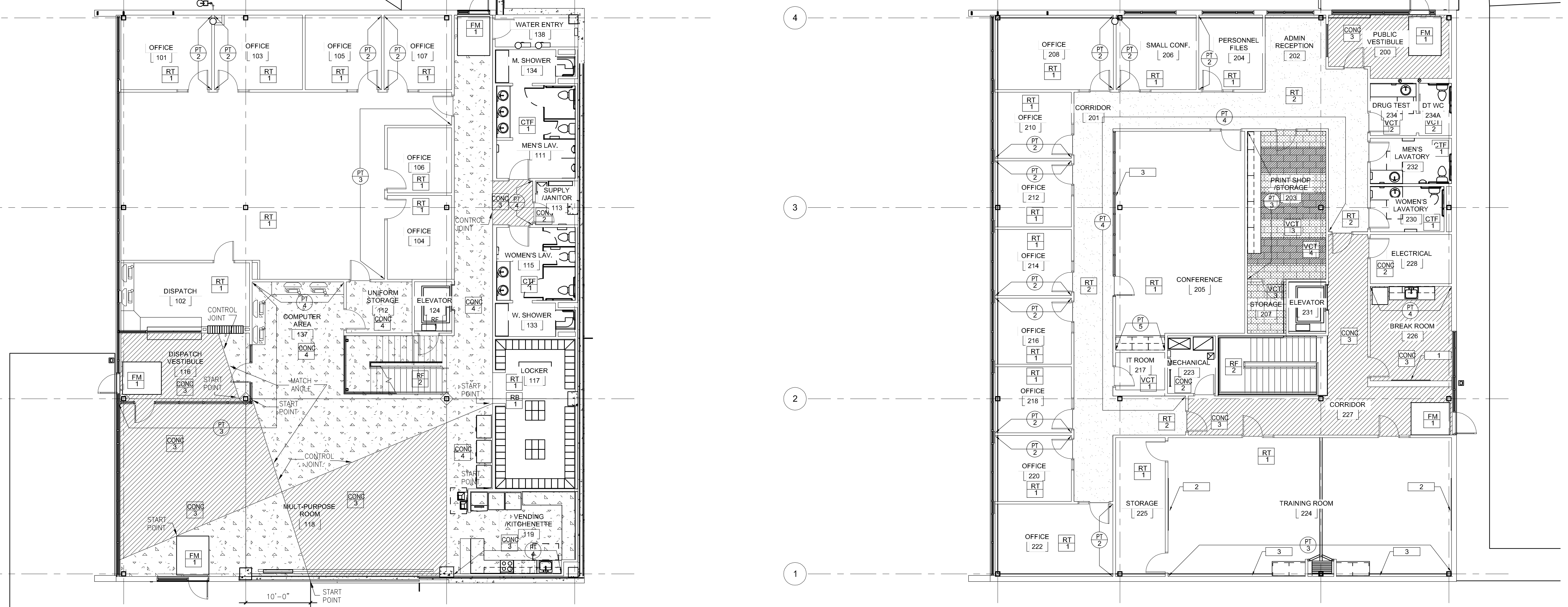


NO.	REVISION/SUBMISSION	DATE
6	ASI #07	09/05/2013

PROJECT No: 3184-01  
DATE: SEE REVISIONS ABOVE  
SCALE: 1/8" = 1'-0"

AREA TAKE-OFFS

**AR-101**  
OF



**NOTES:**

- LEVEL 1 ANGLED CONCRETE CONTROL JOINT LINES AND CONC-3 & CONC-4 FLOOR FINISH LOCATIONS REVISED PER ASI #06
- REFER TO "START POINT" TO DETERMINE EXACT LOCATION OF CONTROL JOINT LINE
- APPLY CONC 4 FINISH UNDERNEATH STAIR

**FINISH LEGEND**

<b>RUBBER TILE</b>	<b>CONC</b>	<b>PAINT</b>	<b>WALL TILE</b>	<b>WALL PANELS/PROTECTION</b>	<b>MILLWORK</b>	<b>WINDOW SHADES</b>	<b>MISC.</b>
FIELD TILE MFR: CAPRI CORK STYLE: RETIRE RECYCLED RUBBER COLOR: INK # RT4302 SIZE: 24x24 - 4MM (NOTE: SEE SPECS FOR FINISH REQS.)	VCT FLOORING MFR: AZROCK STYLE: CORTINA GRANDE COLOR: CG404 PUMICE SIZE: 18 x 18 INSTALLATION: TBD	FIELD PAINT MFR: SHERWIN WILLIAMS COLOR: EXTRA WHITE NUMBER: SW7006 FINISH: EGGSHELL	FIELD WALL TILE - RESTROOM MFR: DAL TILE STYLE: NATURAL HUES COLOR: PEARL WHITE QH83 SIZE: 4" X 8" GROUT: MAPEI WHITE	WALL PROTECTION PANELS (NORTH WALL JANITOR CLOSET) MFR: TBD STYLE: FRP PANELS 4" HIGH COLOR: WHITE	SOLID SURFACE COUNTERTOPS (ADMIN RESTROOMS) MFR: AVONITE COLOR: BLUE PEARL K3-8000 SIZE: 1/2" THICKNESS FINISH: GLOSS EDGE: EASED EDGE	WINDOW ROLLER SHADES - MANUALLY-OPERATED MFR: MECOHO SYSTEMS FABRIC: ECOVIEL. SCREENS DENSE BASKET WEAVE COLOR: TBD OPENNESS: 3% ?? ALUMINUM FASCIA AND ENDS	MARKER BOARD MFR: CLARIDGE OR EQUAL STYLE: LSC2048 COLOR: 32 LCS WHITE FRAME: P FACE, MITERED CORNERS SIZE: 4'0" H X 8'0" W TRAY AND TRIM: SILVER (ALONG ENTIRE LENGTH OF MARKER BOARD)
ACCENT TILE MFR: CAPRI CORK STYLE: SEQUEL RUBBER CORK COLOR: CARBON # SQ5012 SIZE: 19 1/16 x 19 1/16, 3MM	RESILIENT FLOORING MFR: ARMSTRONG STYLE: STRIATIONS COLOR: T3901 ATMOSPHERE SIZE: 12 x 24	ACCENT PAINT (PRIVATE OFFICE) MFR: SHERWIN WILLIAMS COLOR: JAMAICA BAY NUMBER: SW6781 FINISH: EGGSHELL	ACCENT WALL TILE - RESTROOM MFR: DAL TILE STYLE: NATURAL HUES COLOR: CINDER QH08 SIZE: 4" X 8" GROUT: MAPEI	CORNER GUARDS (MAINTENANCE BUILDING) MFR: TO MATCH CS GROUP ACROVYN CO STYLE: STAINLESS STEEL HEIGHT: 4" HT	SOLID SURFACE COUNTERTOPS (BREAKROOM/OFFICE AREA) MFR: AVONITE COLOR: SHARK SKIN F1-7556 SIZE: 1/2" THICKNESS FINISH: SATIN EDGE: EASED EDGE	PLASTIC LAMINATE (BREAKKIT) MFR: FORMICA STYLE: FOLKSTONE 927-SP FINISH: SCULPTED COLLECTION HORIZONTAL PATTERN INSTALL	PLASTIC LAMINATE (DISPATCH/TRAINING/PTR/COPY) MFR: PIONITE STYLE: PF460 SUEDE COLOR: NEGOTIATING IN GENEVA FINISH: MATTE
RECESSED FLOOR MAT	RESILIENT FLOORING MFR: ARMSTRONG STYLE: STRIATIONS COLOR: T3902 STEEL SIZE: 12 x 24 INSTALLATION: VERTICAL ASHLAR	ACCENT PAINT (OPEN OFFICE) MFR: SHERWIN WILLIAMS COLOR: ROBUST ORANGE NUMBER: SW6828 FINISH: EGGSHELL	RUBBER WALL BASE MFR: JOHNSONITE STYLE: COVERED BASE AT HARD SURFACES COLOR: BURNT LUMBER #63 SIZE: 4" H NOTE: ROLL GOODS ONLY	ACoustic WALL PANELS ?? MFR: TO MATCH WHISPER WALL OR EQUAL FABRIC: TBD	SOLID SURFACE COUNTERTOPS (MAINTENANCE RESTROOMS) MFR: AVONITE COLOR: SHARK SKIN F1-7556 SIZE: 1/2" THICKNESS FINISH: SATIN EDGE: EASED EDGE	PLASTIC LAMINATE (DISPATCH/TRAINING/PTR/COPY) MFR: PIONITE STYLE: PF460 SUEDE COLOR: NEGOTIATING IN GENEVA FINISH: MATTE	PLASTIC LAMINATE MFR: PIONITE STYLE: SW811 SUEDE COLOR: WHITE FINISH: MATTE
RESILIENT	CERAMIC TILE	ACCENT PAINT (CONFERENCE) MFR: SHERWIN WILLIAMS COLOR: SILVERPLATE NUMBER: SW7649 FINISH: EGGSHELL	WALL COVERING	WOOD VENEER (CONFERENCE) MFR: CHEMETAL (800-830-5448) STYLE: TREE PROX VENEER SPECIES: 60204 WHITE OAK, STRAIGHT GRAIN FINISH: NATURAL SATIN	PLASTIC LAMINATE (DISPATCH/TRAINING/PTR/COPY) MFR: PIONITE STYLE: PF460 SUEDE COLOR: NEGOTIATING IN GENEVA FINISH: MATTE	PLASTIC LAMINATE MFR: PIONITE STYLE: SW811 SUEDE COLOR: WHITE FINISH: MATTE	PLASTIC LAMINATE MFR: PIONITE STYLE: SW811 SUEDE COLOR: WHITE FINISH: MATTE
RESILIENT STAIR TREAD/RISER MFR: JOHNSONITE STYLE: ROUNDDEL ROUND PATTERN COLOR: 32 PEBBLE SIZE: 24 x 24	CONCRETE FLOOR	HOLLOW METAL DOORS/FRAMES MFR: SHERWIN WILLIAMS COLOR: DOVETAIL NUMBER: SW7019 FINISH: LATEX SEMI-GLOSS	WALL TILE - RESTROOMS MFR: DAL TILE STYLE: TBD COLOR: TBD SIZE: 4" X 8" COVE BASE GROUT: TBD	ACoustic WALL PANELS ?? MFR: TO MATCH WHISPER WALL OR EQUAL FABRIC: TBD	PLASTIC LAMINATE (DISPATCH/TRAINING/PTR/COPY) MFR: PIONITE STYLE: PF460 SUEDE COLOR: NEGOTIATING IN GENEVA FINISH: MATTE	PLASTIC LAMINATE MFR: PIONITE STYLE: SW811 SUEDE COLOR: WHITE FINISH: MATTE	PLASTIC LAMINATE MFR: PIONITE STYLE: SW811 SUEDE COLOR: WHITE FINISH: MATTE
VCT FLOORING (IT ROOM) MFR: AZROCK STYLE: CORTINA GRANDE COLOR: CG403 LOAM SIZE: 18 x 18 INSTALLATION: TBD	QUARTZ AGGREGATE CONCRETE TOPPING LIGHT REFLECTIVE SHAKE ON HARDER MFR: TBD	ACCENT PAINT (OFFICE) MFR: SHERWIN WILLIAMS COLOR: SILVERPLATE NUMBER: SW7007 FINISH: EGGSHELL	TILE WALL TILE - RESTROOMS MFR: DAL TILE STYLE: TBD COLOR: TBD SIZE: 4" X 8" COVE BASE GROUT: TBD	ACoustic WALL PANELS ?? MFR: TO MATCH WHISPER WALL OR EQUAL FABRIC: TBD	PLASTIC LAMINATE (DISPATCH/TRAINING/PTR/COPY) MFR: PIONITE STYLE: PF460 SUEDE COLOR: NEGOTIATING IN GENEVA FINISH: MATTE	PLASTIC LAMINATE MFR: PIONITE STYLE: SW811 SUEDE COLOR: WHITE FINISH: MATTE	PLASTIC LAMINATE MFR: PIONITE STYLE: SW811 SUEDE COLOR: WHITE FINISH: MATTE

**GENERAL NOTES**

- ALL INTERIOR GYP BD PARTITIONS, AND COLUMNS TO BE PAINTED PT-1, U.N.O.
- ALL WALL BASE TO BE RB-1, U.N.O. ROLL GOODS ONLY.
- ALL EXPOSED STEEL TO BE PAINTED, UNLESS NOTED OTHERWISE.
- ALL GYP. BD. CEILING, EXPOSED STRUCTURE, METAL DECKING TO BE PAINTED PT-7, UNLESS NOTED OTHERWISE.
- SCHEDULED FLOOR FINISH SHALL CONTINUE UNDER CASEWORK WITH ATTACHED TOE KICKS, EQUIPMENT, AND FRESH-DRAWN FURNITURE.
- ALL FLOORING TRANSITIONS TO OCCUR AT CENTERLINE OF DOORWAYS, U.N.O.
- FLOORING INSTALLER TO PROVIDE A FLOORING TRANSITION STRIP AT ALL FLOORING MATERIAL TRANSITIONS, U.N.O.
- WALL TEXTURE TO BE LEVEL 4 WALL FINISH, U.N.O. PAINT FINISH TO BE LEVEL 5 @ DARK COLORS.
- REFER TO ELEVATIONS, DETAILS, AND FINISH PLANS FOR ALL FINISH DESIGNATIONS.
- ALL EXTERIOR WINDOWS TO RECEIVE WS-1 WINDOW ROLLER SHADES, U.N.O.
- ELEVATOR SHALL HAVE RT-1 FLOORING INSTALLED, U.N.O. WALLS AND CEILING TO BE WITHIN MANUFACTURERS STANDARD STAINLESS STEEL PANELS ARCHITECT TO SELECT.
- ALL WET WALLS IN RESTROOMS TO RECEIVE TILE, AS NOTED ON ELEVATIONS.
- ALL HOLLOW METAL DOOR FRAMES TO HAVE PT-8, FINISH LEVEL 5, U.N.O.
- AT STAIR, ALL STEEL RISERS, BALUSTERS, TREADS AND STEEL BRACKETS TO BE PAINTED, UNDERSIDE OF STAIR AND STRINGERS TO BE PAINTED PT-1, FINISH TO BE LATEX SEMI-GLOSS.

**KEY NOTES**

- PROVIDE AND INSTALL WALKTALKER TAC-WALL TACKBOARD.
- PROVIDE FIRE TREATED BLOCKING IN PARTITION AND INSTALL WHITEBOARDS.
- PROVIDE AND INSTALL WINDOW ROLLER SHADES WS-1.

2	ASI #06	08/13/2013
1	PERMIT SET	10/19/2012
No	REVISION/SUBMISSION	DATE
PROJECT No: 3184-01		
DATE: SEE REVISIONS ABOVE		
SCALE:		
ADMIN/OPS FINISH PLAN & LEGEND		