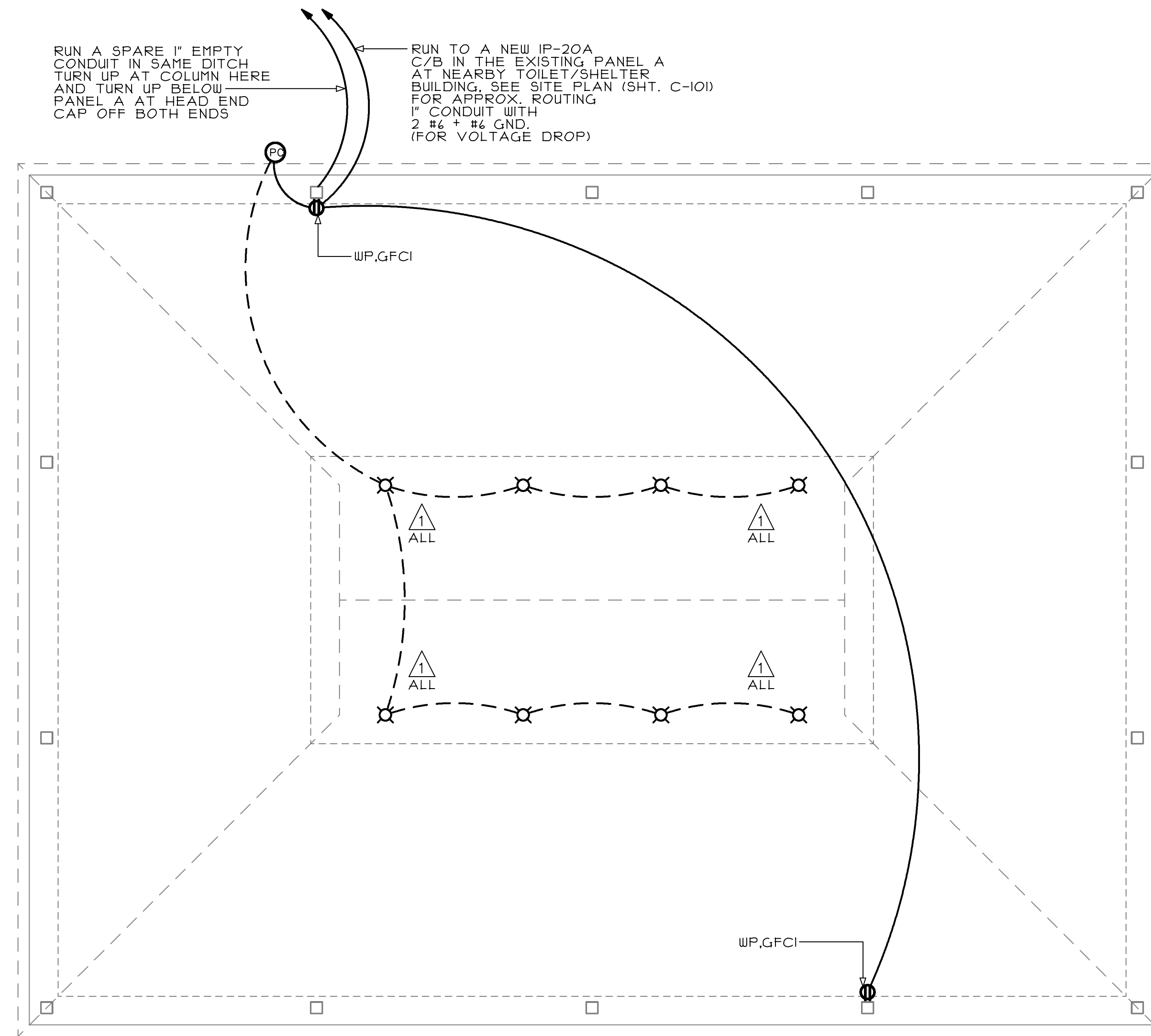


LIGHTING FIXTURE SCHEDULE					
TYPE	MANUFACTURER/CATALOG NO.	LAMPS		MOUNTING	REMARKS
		NO.	TYPE		
I	LUMARK INV5-C-GG-200-120	1	USHIO, COILITE CF24CLT/4100	SURFACE	
SCHEDULE NOTES					
ALTERNATE MANUFACTURER'S: DAY-BRITE, HUBBELL, LITHONIA OR LUMAX.					



ELECTRICAL PLAN

SCALE: 1/4"=1'-0"

SPECIFICATION NOTES	
S1.	ALL WORK IS TO BE COMPLETED IN ACCORDANCE WITH THE 2009 VIRGINIA UNIFORM STATEWIDE BUILDING CODE, LOCAL ORDINANCES AND THE RULES AND REGULATIONS OF THE UTILITIES.
S2.	WIRING SHALL BE IN CONDUIT, MINIMUM SIZE 1/2" OR AS REQUIRED FOR CONDUCTOR NUMBER AND SIZE. USE ELECTRIC METALLIC TUBING WITH WATERTIGHT FITTINGS ABOVE GRADE AND SCHEDULE 40 PVC WITH SOLVENT WELD JOINTS BELOW GRADE OR SLAB.
S3.	CONDUITS PENETRATING EXTERIOR WALLS SHALL BE COMPLETELY WATERTIGHT.
S4.	SUPPORT CONDUIT AND CABLE DIRECTLY FROM THE BUILDING STRUCTURE AS PER CODE REQUIREMENTS. BURIED CONDUITS SHALL BE IN ACCORDANCE WITH NEC TABLE 300.5.
S5.	CONDUCTORS SHALL BE COPPER, MINIMUM SIZE NO. 12 AWG OR AS NOTED. COLOR CODE IN ACCORDANCE WITH CODE. CONDUCTOR INSULATION SHALL BE TYPE THHN/THWN.
S6.	BOXES SHALL BE WEATHERPROOF CAST TYPE, SIZED FOR NUMBER OF CONDUCTORS, FITTINGS AND DEVICES IN ACCORDANCE WITH CODE.
S7.	WIRING DEVICES SHALL BE 20 AMPERE, SPECIFICATION GRADE TYPE. COVERPLATES SHALL BE HIGH-IMPACT PLASTIC OR NYLON. WEATHERPROOF COVERPLATES SHALL BE DIE-CAST ALUMINUM TYPE.
S8.	NEW BREAKERS PROVIDED FOR THE EXISTING PANEL SHALL MATCH EXISTING FRAME SIZES AND AIC RATINGS. UPDATE DIRECTORY TO SHOW ADDED BRANCH CIRCUITS.
S9.	PROVIDE GROUNDING SYSTEM AS PER CODE REQUIREMENTS.
S10.	OBTAIN AND PAY FOR PERMITS AND INSPECTIONS REQUIRED FOR WORK.
S11.	PROVIDE SHOP DRAWINGS OPERATIONS AND MAINTENANCE MANUALS AND MAINTAIN RECORD DRAWINGS PER THE REQUIREMENTS OF THE ARCHITECT.

SYMBOLS LIST	
	OUTLET FOR CEILING OR WALL MOUNTED INCANDESCENT, COMPACT FLUORESCENT OR HID LIGHTING FIXTURE
	LIGHTING FIXTURE TYPE SEE SCHEDULE
	GROUND FAULT CIRCUIT INTERRUPTER AT 18" AFF
	PHOTOCELL, LOCATE IN ACCESSIBLE LOCATION AND SHIELD FROM SURROUNDING LIGHT SOURCES
	SWITCHED BRANCH CIRCUIT WIRING, 2 #12 - CROSS MARKS INDICATE NUMBER OF CONDUCTORS IF MORE THAN TWO
	UNSWITCHED BRANCH CIRCUIT WIRING, 2 #12 - CROSS MARKS INDICATE NUMBER OF CONDUCTORS IF MORE THAN TWO
	BRANCH CIRCUIT HOMERUN TO PANEL PANEL AND CIRCUIT NUMBER DESIGNATED
AFF	ABOVE FINISHED FLOOR
C/EC	CONDUIT/EMPTY CONDUIT
WP	WEATHERPROOF

REVISIONS:
CONSULTANT
MEI engineering, inc.
276 S. LIBERTY STREET
HARRISONBURG, VA 22801
PHONE: (540) 432-6272

CM
ASSOCIATES
ARCHITECTS, P.C.
1951-A EVELYN BYRD AVENUE
HARRISONBURG, VA. 22801
PHONE (540) 434-6044
FAX (540) 434-1142

A NEW SHELTER
FOR THE
CITY OF HARRISONBURG
RALPH SAMPSON PARK
HARRISONBURG, VIRGINIA

DRAWN: WLA	CHECKED: MSG
DATE: JULY 30, 2013	CAD FILE: 13097-E

DRAWING TITLE:
**ELECTRICAL PLAN,
SCHEDULES AND DETAILS**

	PROJECT NUMBER: 13097
	SHEET NUMBER: E-101 SHEET 01 OF 01